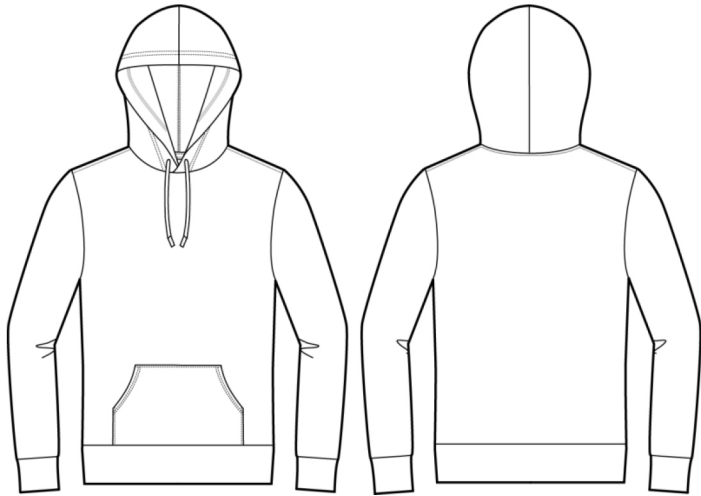


MEASUREMENT SPECIFICATION REPORT



STYLE # : 18500 Hoodie Heavy Blend Hooded Sweatshirt

- 8.0 oz., 50/50 cotton/polyester
- Reduced pilling and softer air-jet spun yarn
- Double-lined hood with color-matched drawcord
- 1x1 athletic rib knit cuffs and waistband with spandex
- Front pouch pocket
- Double needle stitching at waistband and cuffs

	S	M	L	XL	2XL	3XL	4XL	5XL
Body Length	26	27	28	29	30	31	32	33
Body Length Tolerance	1	1	1	1	1	1	1	1
Body Width	20	22	24	26	28	30	32	34
Body Width Tolerance	1	1	1	1	1	1	1	1
Sleeve Length (From Center Back)	33 1/2	34 1/2	35 1/2	36 1/2	37 1/2	38 1/2	39 1/2	40 1/2

Disclaimer: Please note that the above sizing chart is subject to change.^e

***All Sizes in Inches**

