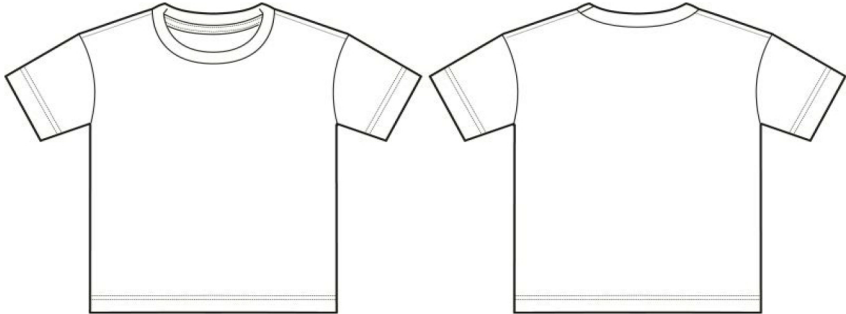


MEASUREMENT SPECIFICATION REPORT

STYLE # 3413B - BABY TRIBLEND SHORT SLEEVE TEE



Points of Measurement (inches)

Body Width - 1" Below A.H.

Body Length From HPS

0-3	3-6	6-12	12-18	18-24
9 1/2	10	10 1/2	11	11 1/2
11 1/4	11 1/4	12 1/4	13 1/4	14 1/4

Disclaimer: Please note that the above sizing chart is subject to change.

